

## Nordic Steel Gutter System

- Strongest gutter system with a 23-gauge steel core, same as a CHEVY TRUCK BODY



- The system has been the World-Wide market leader for 70 years
- NO CAULK - NO LEAKS - EVER
- EPDM end caps installs in seconds, with no caulk or rivets

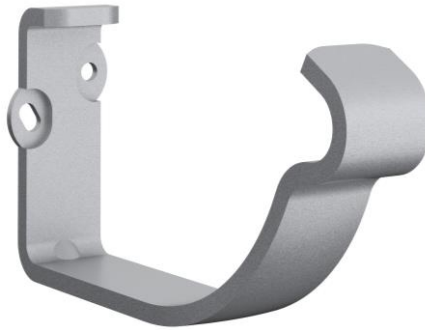


- EPDM gutter connectors allows for expansion and contraction

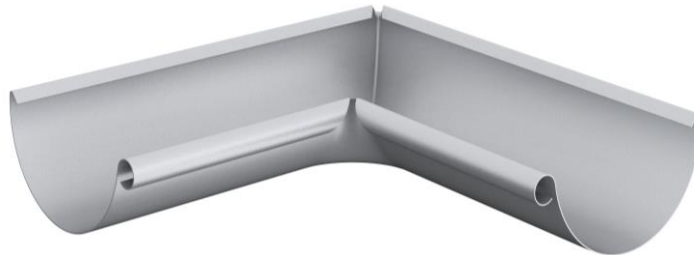


- External hanger allows for expansion and contraction of the gutter and lets the fascia to dry out

- Toughest hangers on the market, supports 175 lbs. each without deforming



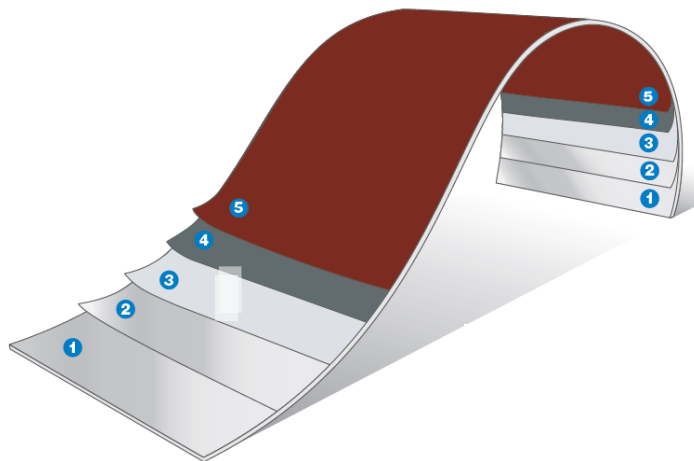
- Miters stamped out of one piece, NO LEAKS



- External bead provides GREAT strength, put your ladder up against the gutter with no worries
- External outlet, NO CAULK - NO LEAKS, allows for a huge hole in the gutter to wash out water and debris
- Round and smooth elbows give GREAT LOOKS and water flow



- G90 (0.9 oz/ft<sup>2</sup>) zinc layer protects the steel system
- Zinc ions travel to protect the steel core, no corrosion
- 20-year non-prorated warranty
- Material build-up is:
  - ✓ 1 Steel sheet
  - ✓ 2 Zinc coating
  - ✓ 3 Passivation layer
  - ✓ 4 Primer coating
  - ✓ 5 Top coating



- All products are painted outside and inside, paint is 45µm THICK on both sides which gives extreme durability
- The system is produced with 30% recycled steel, very GREEN
- The paint system Greencoat™ is the MOST ECO friendly paint system ever manufactured
- Greencoat™ has rapeseed oil (Canola oil) as binding agent, LOWEST ENVIRONMENTAL IMPACT of any paint system



- Greencoat™ has over 40 years of global testing in the harshest weather conditions
- The Greencoat™ paint also contains polymer micro-beads, giving it a shark skin effect with extremely low friction and superior color durability
- The system stays clean and is easy to wipe off, no black tiger striping
- Installed, the system LOOKS FANTASTIC

## The other systems

- Normal .32-gauge can't hold a ladder or a person
- Moss and debris buildup due to poor flow through the K-style or box style gutter systems, poor functionality
- Internal hangers screwed through the water carrying area of the gutter, makes it possible for water to enter the substrate (fascia or wall)
- External and WEAK hangers that fail from high winds and snow
- Rapid thermal movement in aluminum that tugs and wear down joints and points of connection, quickly resulting in LEAKS
- Damage to your fascia, windows and foundation caused by LEAKS, will lower the value of your property and potentially cost lots of money to repair