



**Nordic Steel Gutters**  
the steel rainwater system

**Catalog**



Lindab



Nordic Steel Gutters is the premier distributor of Lindab Rainline™ in the United States. Features and benefits of Lindab Rainline...

**Made to last with the lowest cradle-to-grave impact**

Steel is the ultimate material for roof-drainage systems. It is easier to handle than aluminum and offers minimal thermal movement (thermal movement can cause cracking and result in system leakage). Lindab's Rainline also has the lowest environmental impact of any gutter system.

**Simplified construction**

No special tools or skills are required; gutters and downspouts simply push together without the need for any sealants or fasteners.

**Damage resistant**

The strength of 23 gauge steel coupled with the rigidity of a half round design and the unique Lindab front bead creates a rainwater system that is stronger than other system on the market. Add to this the G-90 galvanization, the passivation layer, primer and high-build polyester paint on both sides of the steel and Lindab Rainline™ Steel gutters will last a lifetime

**Color choice**

Rainline is available in variety of colors (high-build polyester paint finishes). Coated finishes are UV stable and will not fade or crack.

**20-year non-prorated warranty**

Lindab Rainline coated products all come with a standard 20-year coating and 20-year corrosion warranty. The warranty covers the whole system including the integrity of the steel itself.

**Low maintenance**

The only maintenance required is an occasional wipe or wash down. Easy assembly and installation guarantee a long service life.

**Efficient and stylish design for a variety of buildings**

Designed for large or small, classic or contemporary environments. Lindab Rainline is suitable for both residential and commercial applications. No other design moves water more efficiently than round. Half round gutters just work better and naturally empty of leaves and debris.







# Building Confidence

Lindab Rainline is designed to last. Our commitment starts at the beginning.

The raw materials used to manufacture Rainline are rigorously tested along the North Sea of Sweden and the Atlantic coast of France for corrosion, in Florida and Australia for ultraviolet rays, and in China for resistance against environmental pollutants.

## Extreme weather

Part of Lindab's work is to develop and improve the Rainline product solutions by exposing them to accelerated tests in a laboratory environment. However, the most correct and revealing method is to test them in the same environment the products are to be used in, namely the reality of harsh weather conditions over long periods of time.

## Tested in the world's toughest climates

Lindab puts their materials through rigorous testing year after year. Some facilities are located only yards from the toughest sea shore environments available, like the west coast of Sweden or France exposed to the Atlantic ocean, whereas others are in sun drenched locations like south of Miami. We receive valuable feedback on our products performance in different conditions that goes straight back into our R & D.



Swerea (Swedish corrosion institute) facility at Kvarnvik on the Swedish west coast

## What do we measure?

The samples mounted at Kvarnvik are there for a period of 5 years and measured every 6 months for:

- Gloss
- Coating thickness
- Color deviation from original

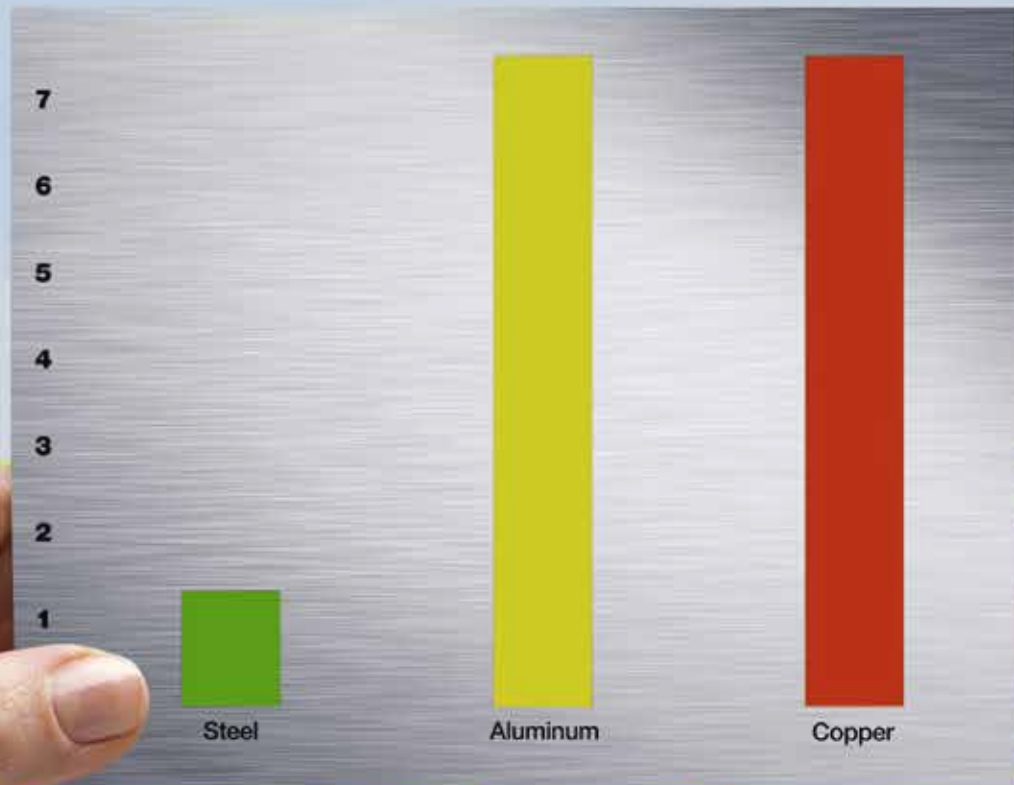


Q-Labs facility south of Miami in Florida. Photo courtesy of Q-Lab Corporation, [www.q-lab.com](http://www.q-lab.com)





## The gutter system with the lowest CO<sub>2</sub> footprint



Greenhouse gasses produced per CO<sub>2</sub> equivalent.  
Sources: world steel org, world-aluminum org and eceee org

Increasingly customers are asking for the carbon footprint of products prior to purchase. With this in mind, Lindab strives to minimize the environmental impact caused by the company's operations and products; this environmental

commitment means that products are developed based upon a life-cycle perspective, with set targets for continual improvements.

Lindab Rainline has the lowest carbon footprint of any gutter

system, and is manufactured with up to 30% recycled material. In addition, at the end of its life-cycle, the Rainline system can be 100% recycled.



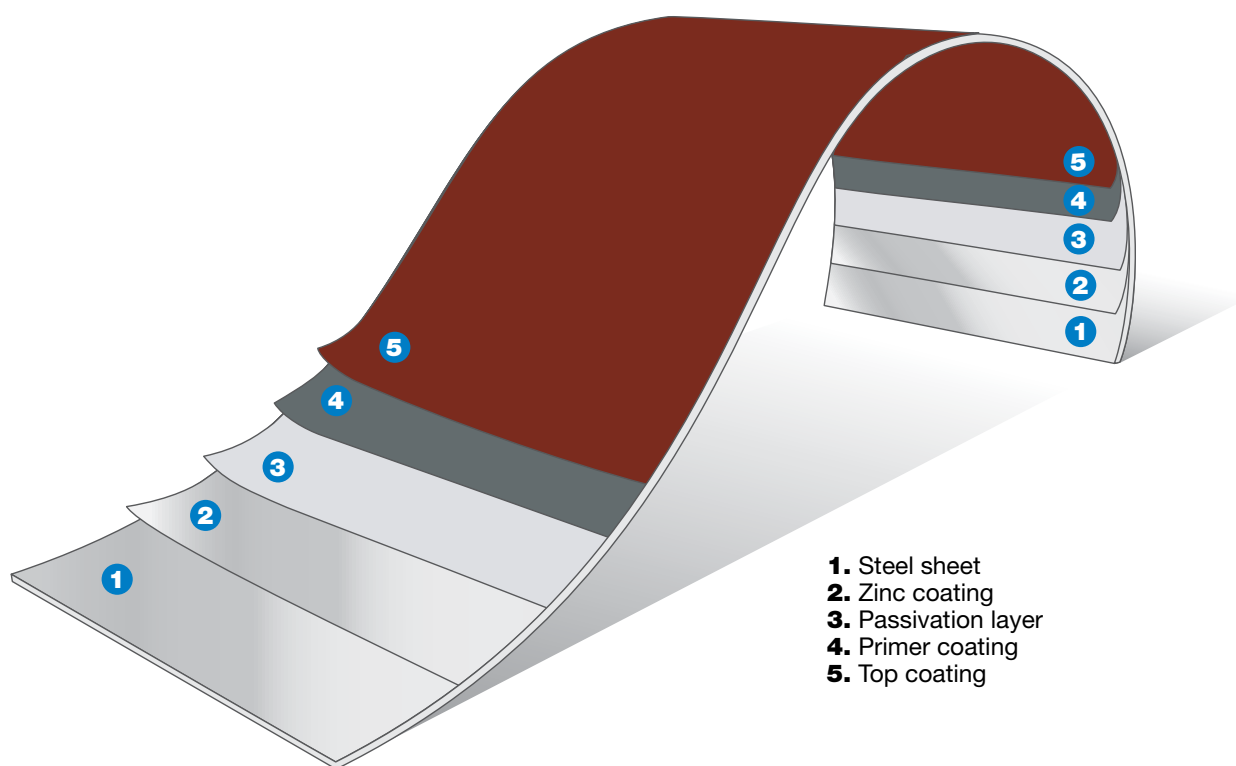
# Lindab Rainline is designed to last

Lindab Rainline is the gutter system that offers the highest quality and is designed to last.

Rainline has been developed to combine ingenuity and durability creating products that are easily installed and provides decades of service.

The useful life of a component is of vital importance; the longer the lifetime, the fewer components needed to be produced, making the cradle-to-grave impact of Rainline even less.

To further Rainline's lifespan, products are coated with four protective layers. These coatings are applied to both sides of the steel to shield components from damage.







# We're here to help with advice and assistance

At Nordic Steel Gutters, our aim is to match the reliability of our products with that of our service. Customer support is a core part of our business philosophy. We are proud of the relationships we have developed with architects, developers and contractors across the nation. We have done this by focusing on one of our core values: customer success.

## **Office support**

We have dedicated customer support in Virginia Beach, VA which can provide you with technical assistance, quotes and problem-solving solutions just pick up the phone. Send us your building drawings and we will be happy to provide a product take-off.

## **Field Support**

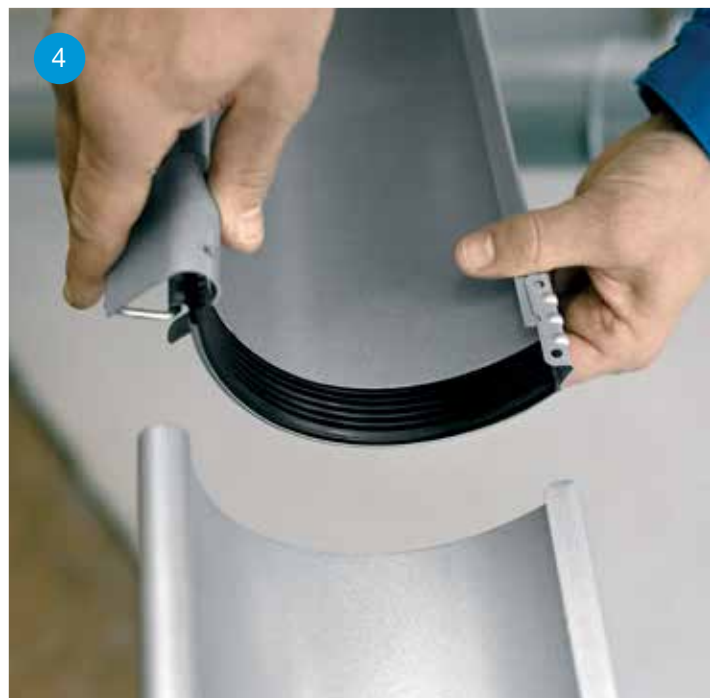
We have a dedicated team who have been extensively trained and educated with Nordic Steel Gutters. Our team is available to visit you, either onsite, or in your office. We will provide full technical support and work closely with your designated contractor. We can also offer product demonstrations or lunch-and-learns in order to introduce you and your staff to the unique features and benefits of Lindab Rainline.

## **Distribution**

Our distribution network is published online at [www.nordicsteelgutters.com](http://www.nordicsteelgutters.com). Deliveries are also available directly from our warehouse in Virginia Beach.

For more information about our product range or to find your nearest supply house, please do not hesitate to contact us.







# Choosing the right gutter system has never been easier

Thanks to its many ingenious and unique design solutions, Lindab Rainline has become the preferred gutter system by most professionals. With its unique hand-in-glove fit and overall quality it guarantees quick installation and a high functionality – for decades to come.

## 1. Adjustable hanger

This hanger can be adjusted to match any fascia board angle. Strong and extremely easy to fit.

## 2. End cap

These ends are self-sealing with an EPDM tube. They are interchangeable and easily fitted with a single firm tap from a soft hammer.

## 3. Downspout bracket

Constructed from a solid piece of steel, the downspout bracket mounts a downspout with one simple click.

## 4. Gutter connector

These gutter connectors are easy to fit, creating a very firm and durable joint. The joints are guaranteed leak-proof with a long-lasting EPDM seal.

## 5. Plug-in outlet

This versatile gutter outlet easily fits to the half round shape of the gutter. The large diameter hole created when installing the outlet allows for debris to easily drain from the gutter; plus the extremely efficient half round design keeps the bottom of the gutter from becoming obstructed.



001



Antique white  
RAL 9002

015



Black  
RAL 9005

044



Anthracite metallic  
RAL 9007

045



Silver metallic  
RAL 9006

387



Dark bronze  
RAL 8019

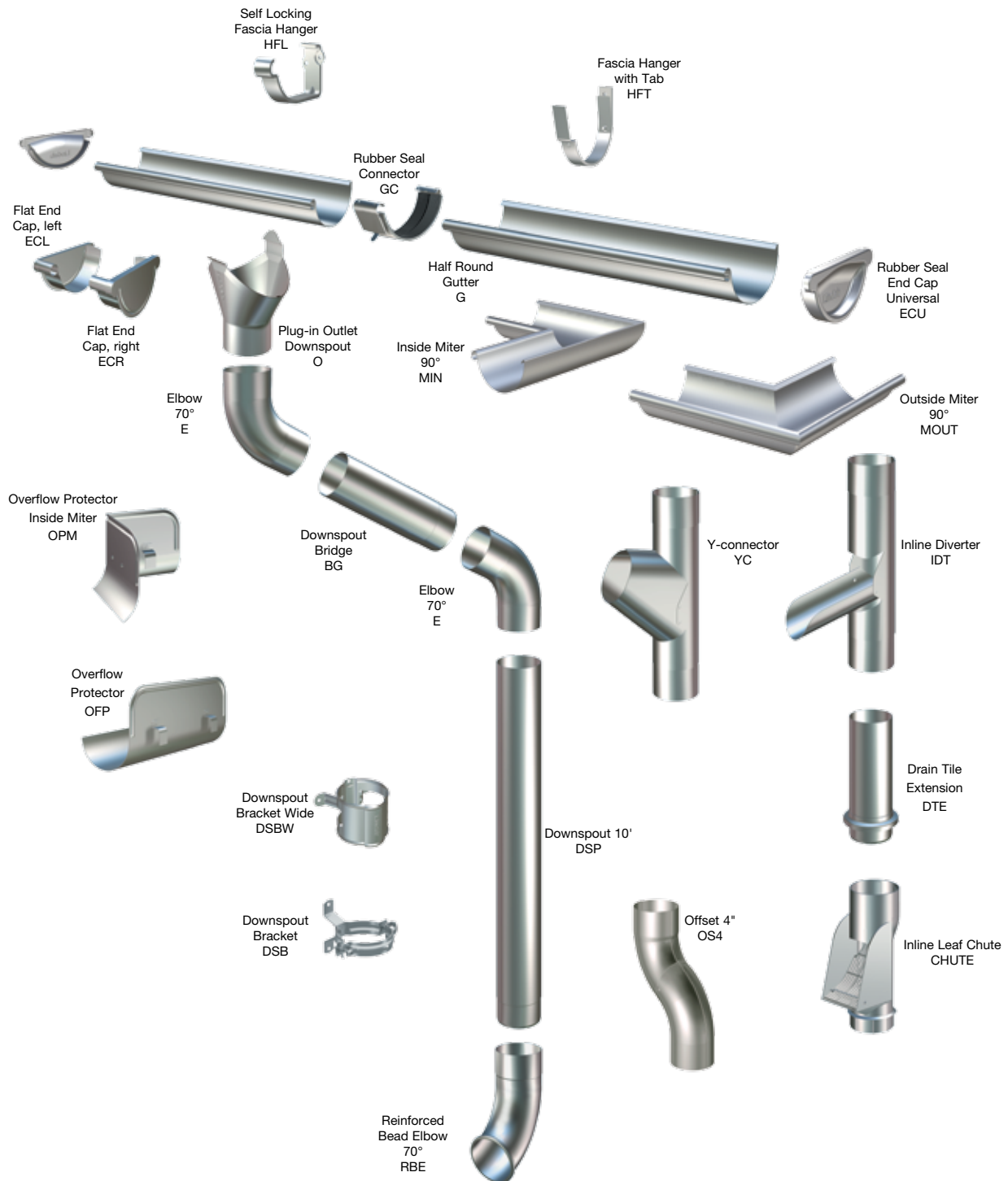
778



Copper metallic  
RAL 8003



# Nordic Steel Gutters Product Diagram





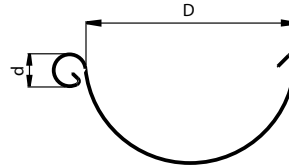
## Gutter & Accessories



### G Half Round Gutter

Dim	D	d
	inch	inch
6"		.67
8"		.87

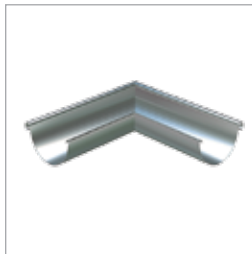
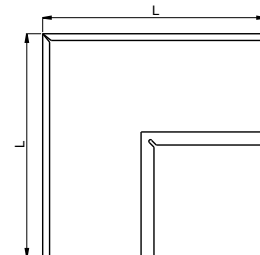
23 gauge, galvanized steel



### MIN Inside Miter 90°

Dim	L
	inch
6"	11.8"
8"	19.7"

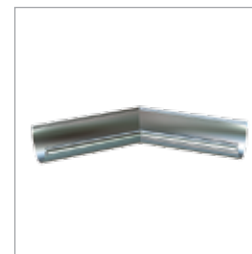
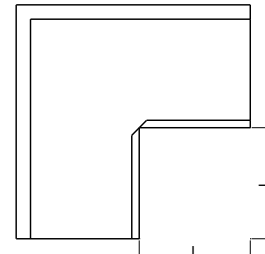
23 gauge, galvanized steel



### MOUT Outside Miter 90°

Dim	L
	inch
6"	5.11"
8"	11.22"

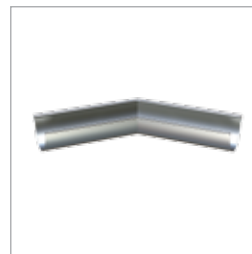
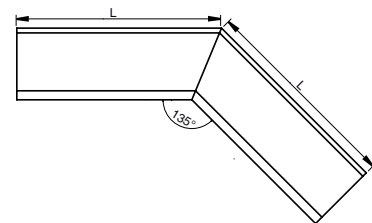
23 gauge, galvanized steel



### MIN 135 Inside Miter 135°

Dim	L
	inch
6"	11.81"
8"	19.70"

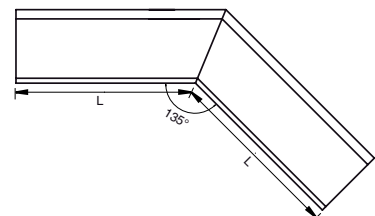
23 gauge, galvanized steel



### MOUT 135 Outside Miter 135°

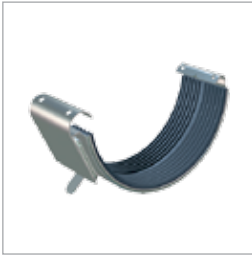
Dim	L
	inch
6"	9.05"
8"	16.34"

23 gauge, galvanized steel





## Gutter & Accessories

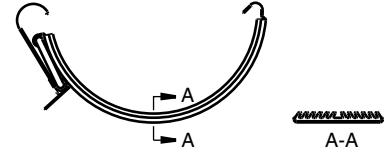


### GC Rubber Seal Connector

Dim

6"

23 gauge, galvanized steel

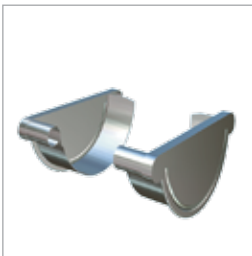
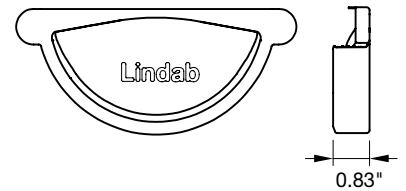


### ECU Rubber Seal End Cap, Universal

Dim

6"

23 gauge, galvanized steel

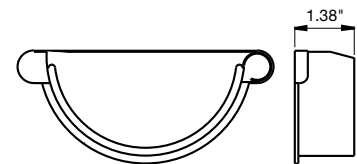


### ECL/ECR Flat End Cap, left/right

Dim

8"

23 gauge, galvanized steel



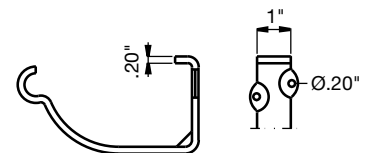
### HFL Self Locking Fascia Hanger

Dim

6"

8"

3/16" thick, galvanized steel



### HFT Fascia Hanger with Tab

Dim

L

inch

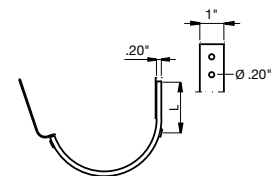
6"

1.93"

8"

2.05"

3/16" thick, galvanized steel





## Gutter & Accessories

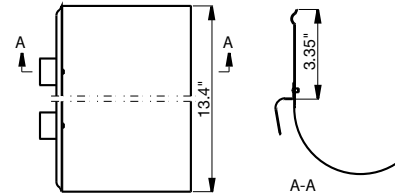


### OFP Overflow Protector

Dim

6"

23 gauge, galvanized steel

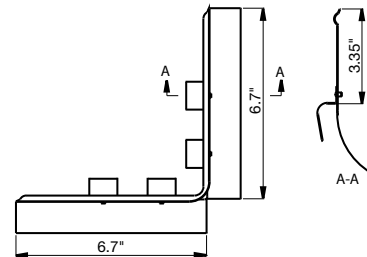


### OPM Overflow Protector Inside Miter

Dim

6"

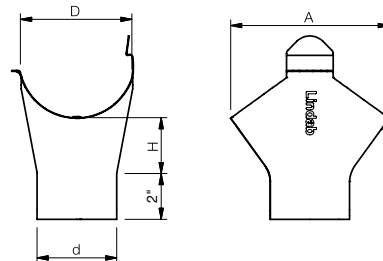
23 gauge, galvanized steel



### O Plug in Outlet

Dim	A	H
D/d	inch	inch
6"/4"	8.35"	2.87"
8"/4"	7.09"	2.44"

23 gauge, galvanized steel



## Downspout & Accessories



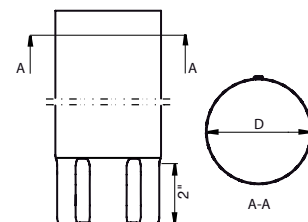
### DSP Downspout 10'

Dim

D

4"

23 gauge, galvanized steel



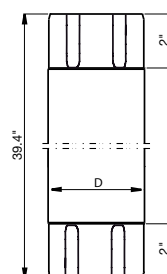
### BG Downspout Bridge 3'

Dim

D

4"

23 gauge, galvanized steel



## Downspout & Accessories



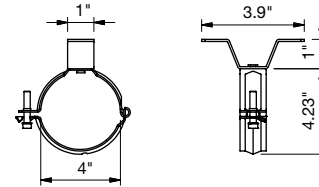
### DSB Downspout Bracket

Dim

D

4"

galvanized steel



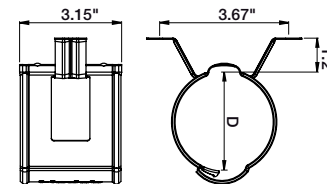
### DSBW Downspout Bracket Wide

Dim

D

4"

23 gauge, galvanized steel



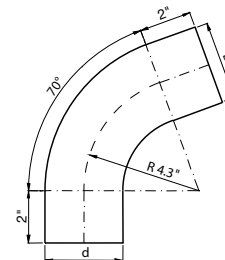
### E Elbow 70°

Dim

D/d

4"

23 gauge, galvanized steel



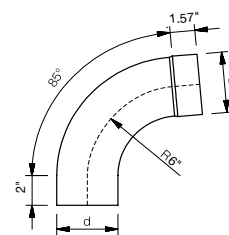
### E Elbow 85°

Dim

D/d

4"

23 gauge, galvanized steel



### RBE Reinforced Bead Elbow 70°

Dim

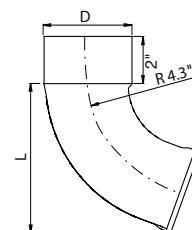
L

inch

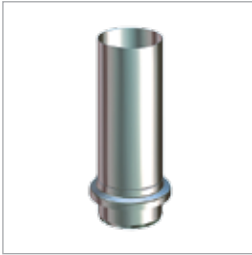
4"

4.45"

23 gauge, galvanized steel



## Downspout & Accessories

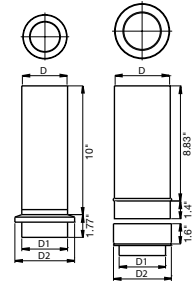


### DTE Drain Tile Extension

Dim	D1	D2
	inch	inch

4"	4"	4.5"
----	----	------

23 gauge, galvanized steel

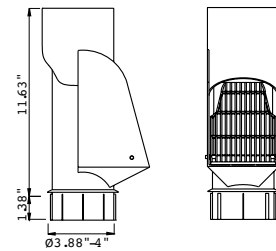


### CHUTE Inline Leaf Chute

Dim

4"

HDPE High Density Polyethylene

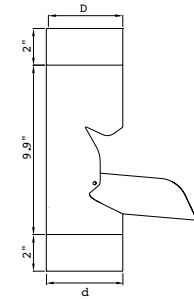


### IDT Inline Diverter

Dim

4"

23 gauge, galvanized steel



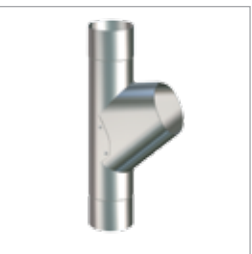
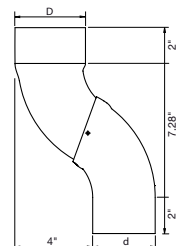
### OS4 Offset 4"

Dim

D/d

4"

23 gauge, galvanized steel

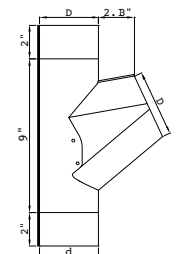


### YC Y-connector

Dim

4"

23 gauge, galvanized steel













[www.nordicsteelgutters.com](http://www.nordicsteelgutters.com)

**Nordic Steel Gutters, LLC.** PO Box 56227, 2509 George Mason Drive, Virginia Beach, VA 23456  
Email: [info@nordicsteelgutters.com](mailto:info@nordicsteelgutters.com) | Web: [www.nordicsteelgutters.com](http://www.nordicsteelgutters.com)

© 2017 All rights reserved. Nordic Steel Gutters is a registered trademark. NSG reserves the right to make alterations without prior notice. Whilst every care has been taken in the preparation of this brochure, some changes may have occurred since publication. NSG is not responsible for omissions or typographical errors.