



Nordic Steel Gutters  
the steel rainwater system



## ≡ Question ≡

**How many** square, flat bottomed or rectangular pipes do you have in your house?

Well exactly - **none!**

**Why?** Because a round pipe is the most efficient mover of fluids.





Nordic Steel Gutters is the quality leader in the United States, with functionality and aesthetics beyond compare.

### **Sustainable and green**

Steel is the ultimate material for gutter systems. It is much stronger than aluminum, and it expands and contracts half as much. The movement in the material is what causes all the leaks in the aluminum systems. With the sectional steel system and EPDM joints, there are no leaks. The paint system Greencoat® is completely based on canola oil. This makes it the Eco-friendliest paint, and most sustainable gutter system in the world.

### **Easy and quick installation**

The Nordic gutter system does not require any caulk to function: All pieces fit together perfectly every time. Joints and end caps are very fast to install, and are completely leak and caulk free. It is a great system in every meaning of the word.

### **Strongest gutter on the market**

How many systems can brag about having the strength to carry grown men walking in the gutter? Nordic can. The hangers are so strong that you can easily do pullups on them

once installed. Combine that with a 23-gauge system, and you probably have the strongest gutter system in the world. Put ladders up against the gutter, no problem.

### **Color choice**

The Nordic gutter system is available in both traditional and contemporary colors. The paint has a luster that gives an unparalleled aesthetic appeal.

### **20-year warranty**

The Nordic steel gutter system has been sold for more than seven decades, in most corners of the world, and in all kinds of climate conditions. Developed in the harsh Scandinavian climate, it truly has been forged by the elements. The 20-year non-prorated warranty covers the whole system.

### **Maintenance free**

Nothing is truly maintenance free. However, the paint system's unique buildup and qualities in remaining clean gets it pretty close. Greencoat® acts similar to a shark's skin, providing extremely low friction, like a non-stick surface. Combine

that with the completely caulk free system, and huge outlet, and now you have a well-functioning gutter system. Washing the system is easier than washing your car.

### **Super high functionality**

There is a reason why we have all our plumbing run through round pipes. Big concrete storm drains under roads are all round. The list goes on and on. The simple answer is that round shapes are the most efficient way to move water, and the half round gutter system is simply that; a half pipe. The Nordic steel gutter system is super-efficient. There is no caulk in corners or screws blocking the outlet. Water naturally collects to the bottom and washes debris out. Helped by extremely low friction and lack of any obstructions, it simply works.





## ≡ *Answer* ≡

A half-round gutter is half a pipe, with water collecting to the bottom. Moving with speed and purpose, and cleaning out like nothing else.





# Building Confidence

Our commitment starts at the beginning.

## **A trusted product**

People don't spend time thinking about if their gutters are of high quality or tested. Using our system prevents expensive home repair bills in the future. Therefore, smart homeowners use the most trusted gutter system. That system is Nordic Steel Gutters.

## **Tested in the world's toughest climates**

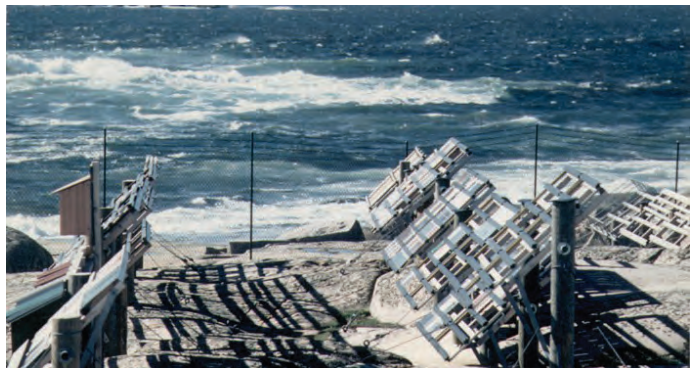
These tests are international, with all test sites being certified and under strict control. We only use locations of the highest standard around the world. Sites located on the west coasts of France and Sweden are used for corrosion testing. These places are only yards from the Atlantic Ocean. There, the products are exposed to some of the harshest weather on the planet. In Florida and Australia, the products get extreme exposure to sunlight for UV testing. Other locations give answers on sand abrasion, while urban places answers how highly polluted and acidic air affects the products.



Swerea (Swedish corrosion institute) facility at Kvarnvik on the Swedish west coast

## **Using the force of nature**

40 years of harsh weather testing with salty stormy winds, is the reason for the sustainable, high-quality products. The products are measured every 6 months for gloss, coating thickness, color deviation, as well as other quality aspects.



Q-Labs facility south of Miami in Florida. Photo courtesy of Q-Lab Corporation, [www.q-lab.com](http://www.q-lab.com)

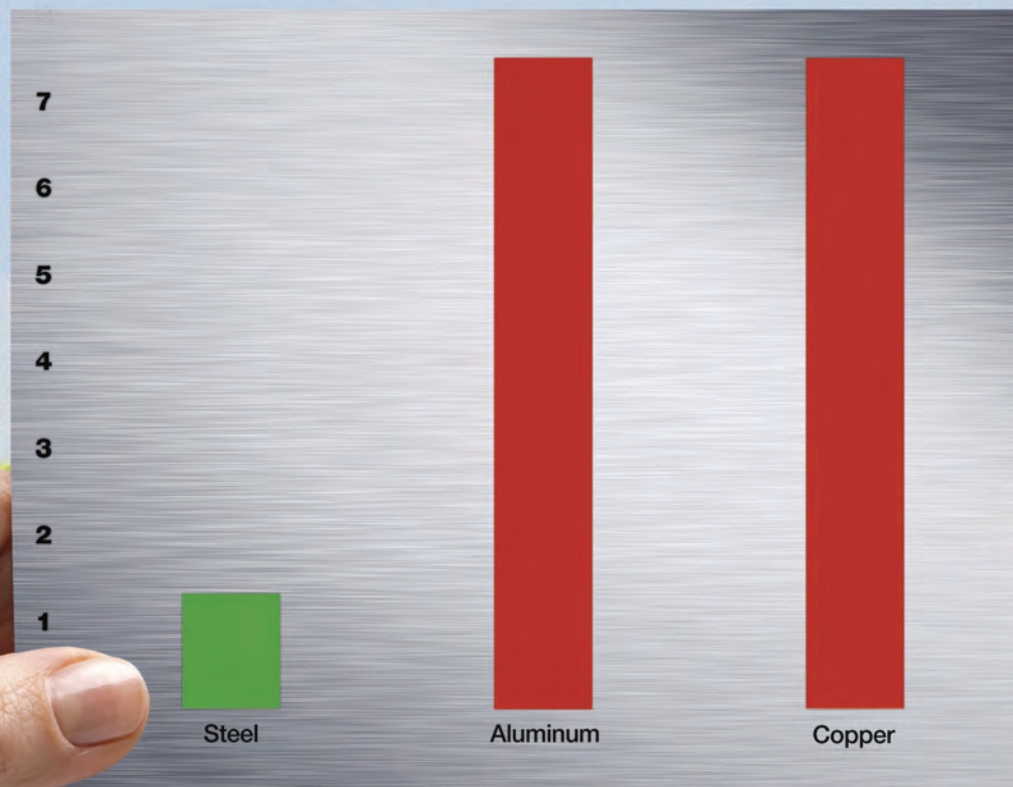






## Sustainable Champion

The Nordic gutter system is made from steel which outperforms all other materials. It has the lowest carbon footprint of any gutter system. It's manufactured with 30% recycled material, and at the end of its life cycle it can be 100% recycled. If you want to go green, go Nordic!



Greenhouse gasses produced per CO<sub>2</sub> equivalent.  
Sources: world steel org, world-aluminum org and eceee org



# Material buildup designed to last

## Cross section

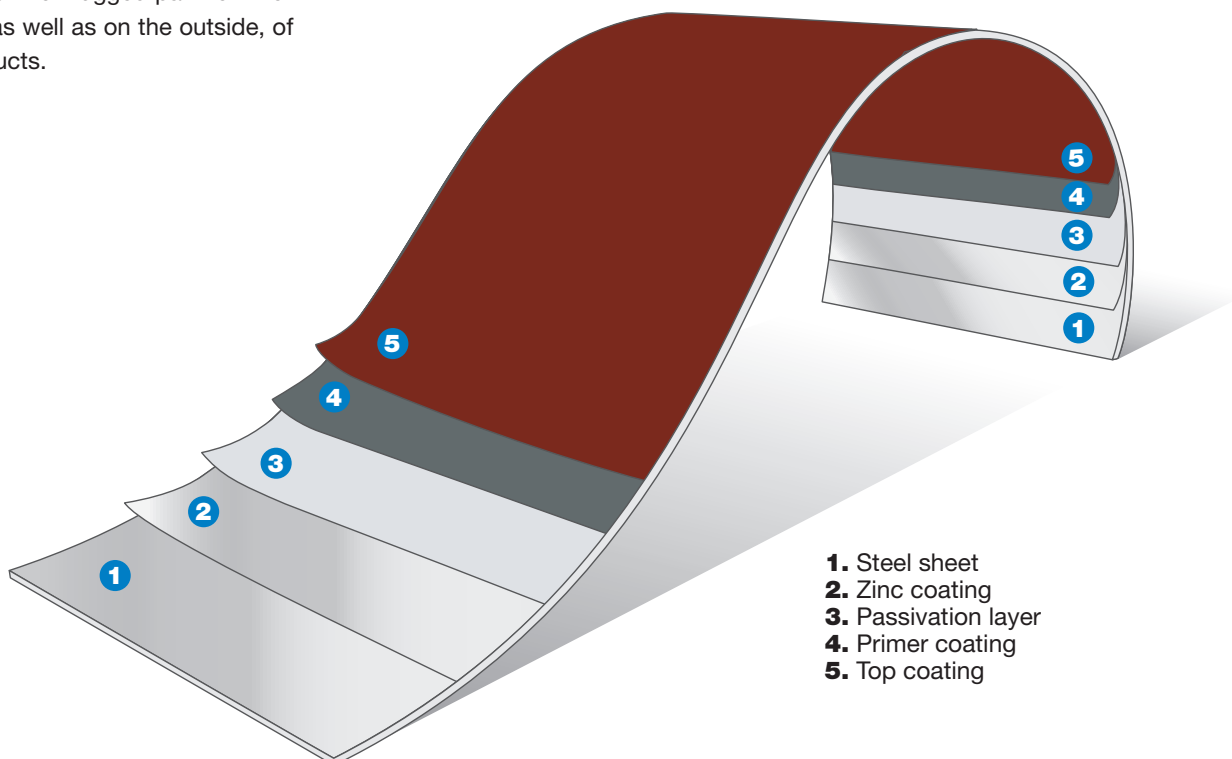
The material has a strong but formable inner steel core. It is protected by a layer of galvanization on both sides. The 20-23 gauge material thickness, depending on product in the system, holds real strength. Because different qualities of steel are used, it is possible to form components one otherwise could not. The material is identical on both sides, which means you have the thick rugged paint on the inside, as well as on the outside, of all products.

## Greencoat®

The canola-based paint system is a wonder of eco friendliness. Developed over years of harsh testing, it has become a fantastic product. The paint is built up of a primer and a topcoat, applied so they seal and protect the galvanization and steel core. Extremely low surface friction helps keep the system looking new for a long time.

## Lifespan

The strong steel core, combined with this great paint system, provides a very long-life expectancy. It is a completely caulk free system. The products fit together perfectly every time, which guarantees that the system never leaks. This gutter system provides protection and brings value to your home for decades to come.









# The success of our customers is our success

At Nordic Steel Gutters, our aim is to match the reliability of our products with that of our service. Customer support is a core part of our business philosophy. We are proud of the relationships we have developed with architects, developers and contractors across the nation. We have done this by focusing on one of our core values: customer success.

## **Office support**

We have dedicated customer support in Virginia Beach, VA, which can provide you with technical assistance, quotes and problem-solving solutions, just pick up the phone. Send us your building drawings and we will be happy to provide a product take-off.



## **Field support**

We have a dedicated team who have been extensively trained and educated with Nordic Steel Gutters. Our team is available to visit you, either onsite, or in your office. We will provide full technical support and work closely with your designated contractor. We can also offer product demonstrations or lunch-and-learns in order to introduce you and your staff to the unique features and benefits of our system.



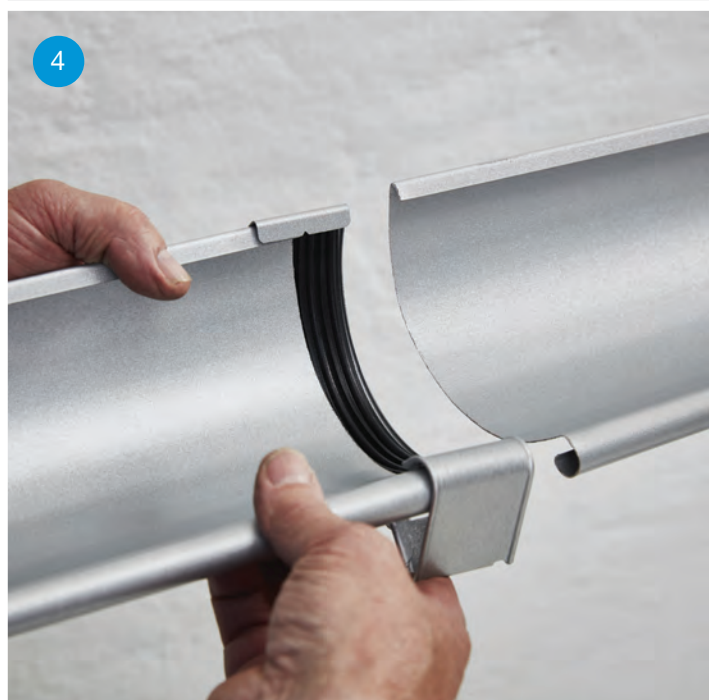
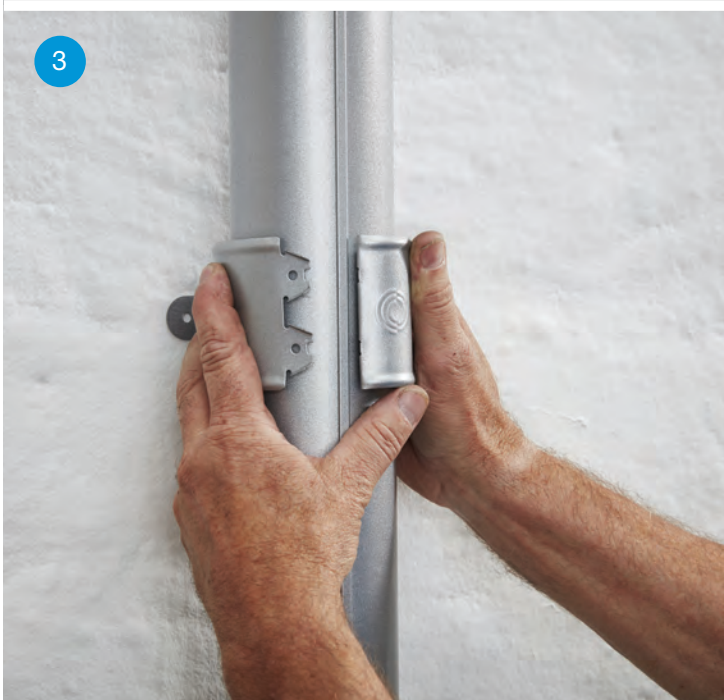
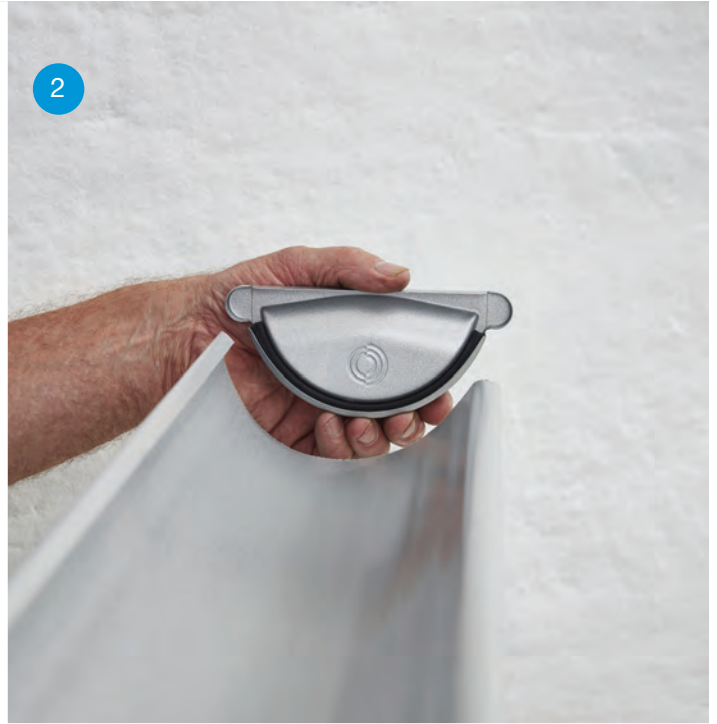
## **Distribution**

Our distribution network is published online at [www.nordicsteelgutters.com](http://www.nordicsteelgutters.com). Deliveries are also available directly from our warehouse in Virginia Beach.

For more information about our product range or to find your nearest supply house, please do not hesitate to contact us and our external sales reps.









# Unique selling points

## 1. Adjustable hanger

This hanger is perfect when you have a perpendicular fascia board to your roof, meaning the fascia board slopes. The hanger has 8 settings, from zero roof pitch (vertical fascia board) up to 12/12 pitch. It is truly a great and versatile hanger. Produced from a super strong 18-gauge steel core, this hanger holds a great load like all the others.

## 2. End cap

The end caps are universal, meaning one product fits both the right and the left side of the gutter. The ears are pre stamped, and easy to break off if you need to install it flush against the siding. The four-flanged sturdy EPDM rubber gasket seals the end cap against the gutter. There is no need for any caulk, in fact you should not use any. You simply tap it on with

your hand or a rubber mallet. Once on, it seals 100% and does not come off without a struggle.

## 3. Downspout bracket

This bracket does not require screws through the downspout; it simply wraps around, and is closed in two simple steps. Once closed it does not let go, so you can pretty much climb the downspout. Even though it has a super strong hold, you can use a flat head screwdriver or your keys to open it. Pop it up to replace the downspout should you need to, without having to make new holes in your substrate.

## 4. Gutter connector

The gutter connector is installed in seconds. It seals 100% without any caulk, so do not use any. The EPDM rubber is multi flanged and soft by design. This way it adapts and follows

the gutters or miters when it is locked on. It naturally acts as the expansion joint, solving longer installations with ease.

## 5. Outlet

The external outlet locks into the bead of the gutter, and wraps around the gutter in seconds. Installed, it allows for an opening of at least 7 by 5 inches. With this outlet there is no need for caulking. The unrestricted opening effectively cleans out most debris.

001



White  
RAL 9002

015



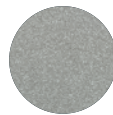
Black  
RAL 9005

044



Anthracite  
metallic  
RAL 9007

045

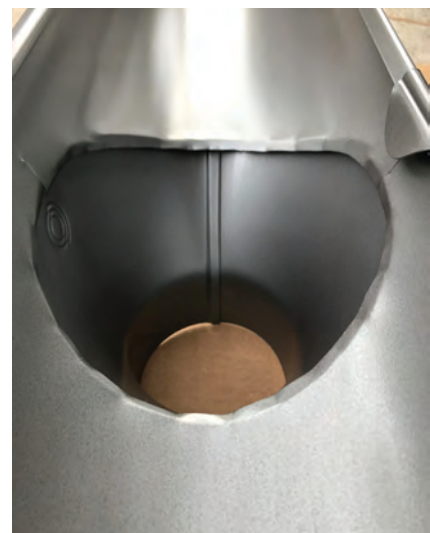


Silver  
metallic  
RAL 9006

387

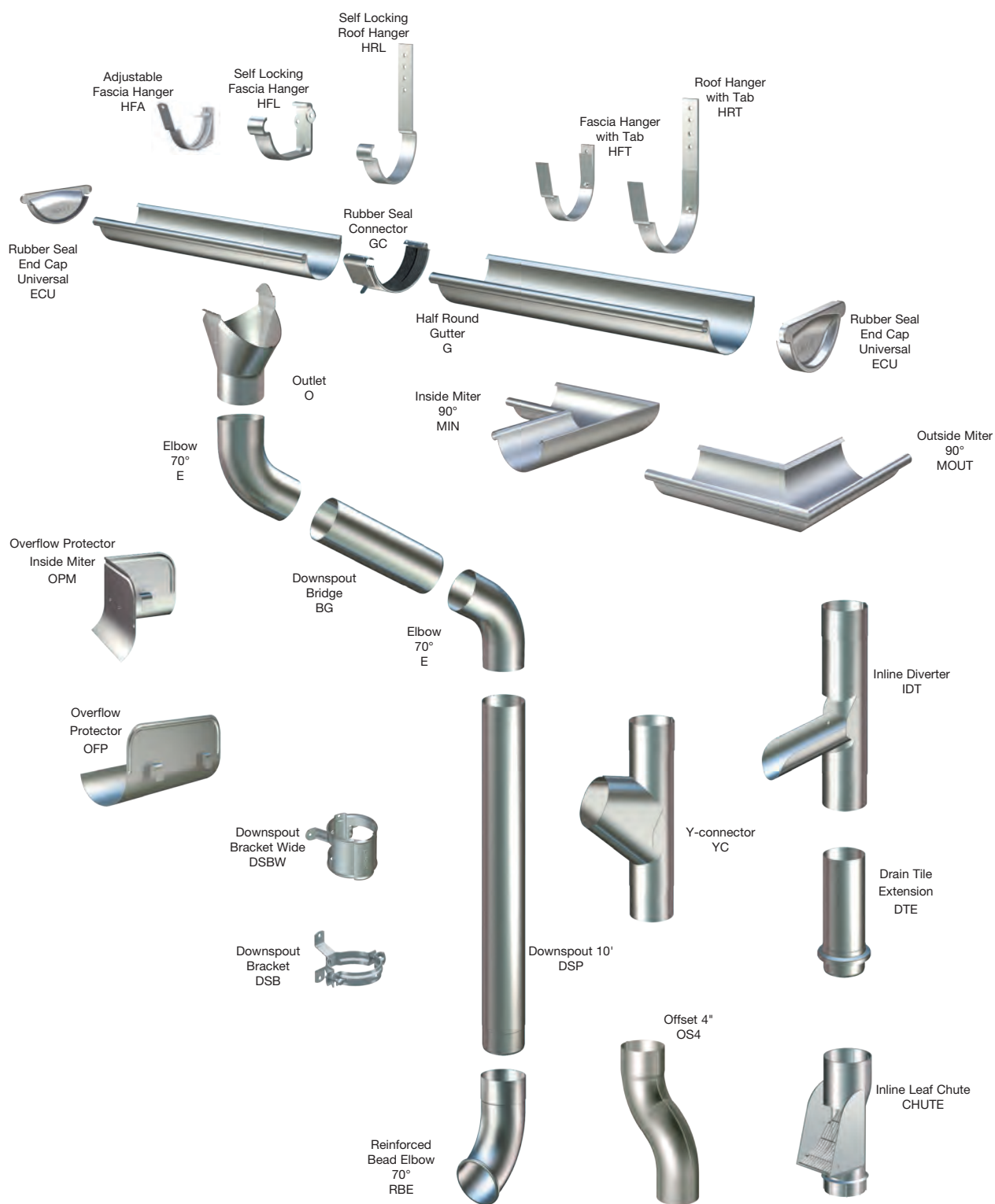


Dark bronze  
RAL 8019





# Nordic Steel Gutters Product Diagram





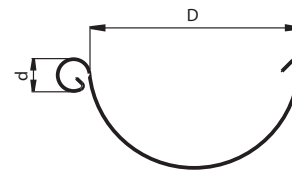
## Gutter & Accessories



### G Half Round Gutter 10'

Dim	D	d
	inch	inch
	6"	.67

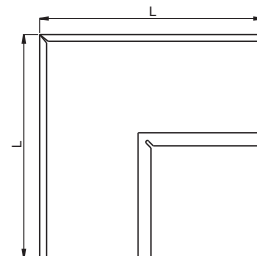
23 gauge, galvanized steel



### MIN Inside Miter 90°

Dim	L
	inch
6"	11.8"

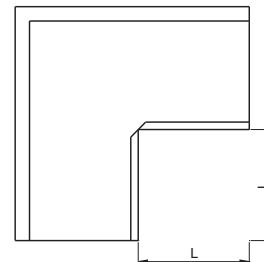
23 gauge, galvanized steel



### MOUT Outside Miter 90°

Dim	L
	inch
6"	5.11"

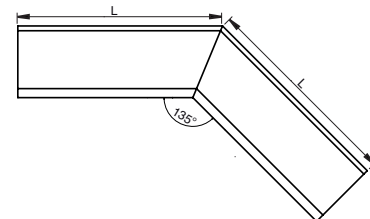
23 gauge, galvanized steel



### MIN 135 Inside Miter 135°

Dim	L
	inch
6"	11.81"

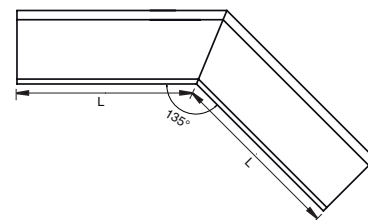
23 gauge, galvanized steel



### MOUT 135 Outside Miter 135°

Dim	L
	inch
6"	9.05"

23 gauge, galvanized steel

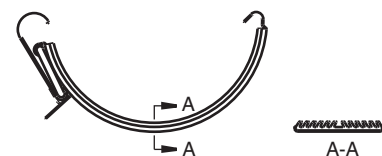


### GC Rubber Seal Connector

Dim

6"

23 gauge, galvanized steel





## Gutter & Accessories

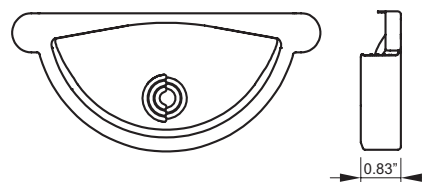


### ECU Rubber Seal End Cap, Universal

Dim

6"

23 gauge, galvanized steel

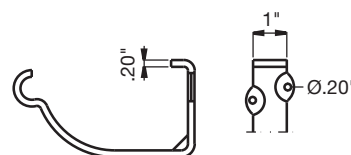


### HFL Self Locking Fascia Hanger

Dim

6"

3/16" thick, galvanized steel



### HFT Fascia Hanger with Tab

Dim

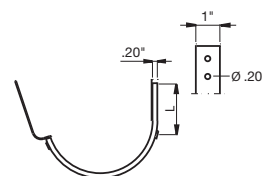
L

inch

6"

1.93"

3/16" thick, galvanized steel



### HFA Adjustable Fascia Hanger

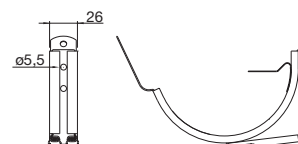
Dim

L

inch

6"

18 gauge, galvanized steel



### HRL Self Locking Roof Hanger

Dim

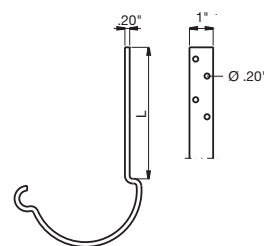
L

inch

6"

7.7"

3/16" thick, galvanized steel



### HRT Roof Hanger with Tab

Dim

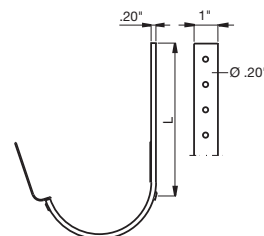
L

inch

6"

8.43"

3/16" thick, galvanized steel





## Gutter & Accessories

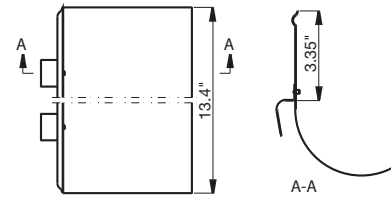


### OFP Overflow Protector

Dim

6"

23 gauge, galvanized steel

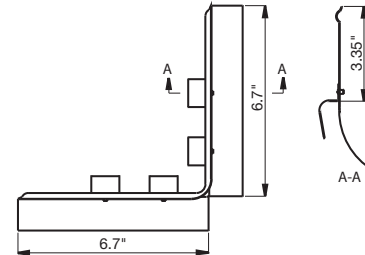


### OPM Overflow Protector Inside Miter

Dim

6"

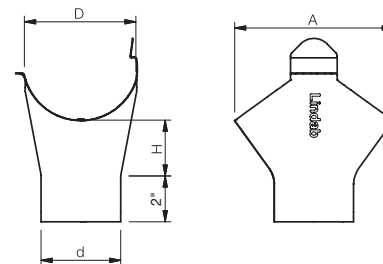
23 gauge, galvanized steel



### O Outlet

Dim	A	H
D/d	inch	inch
6"/4"	8.35"	2.87"

23 gauge, galvanized steel



## Downspout & Accessories



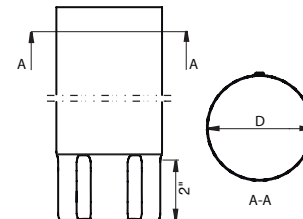
### DSP Downspout 10'

Dim

D

4"

23 gauge, galvanized steel



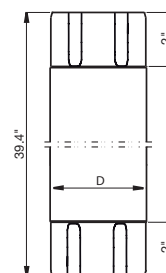
### BG Downspout Bridge 3'

Dim

D

4"

23 gauge, galvanized steel





## Downspout & Accessories



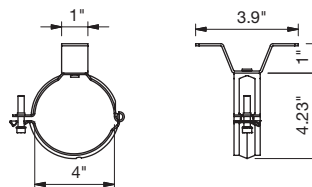
### DSB Downspout Bracket

Dim

D

4"

18 gauge, galvanized steel



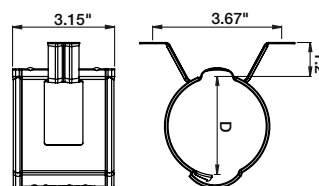
### DSBW Downspout Bracket Wide

Dim

D

4"

23 gauge, galvanized steel



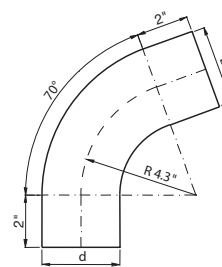
### E Elbow 70°

Dim

D/d

4"

23 gauge, galvanized steel



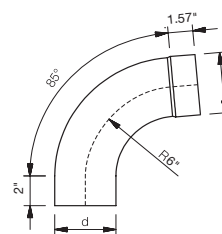
### E Elbow 85°

Dim

D/d

4"

23 gauge, galvanized steel



### RBE Reinforced Bead Elbow 70°

Dim

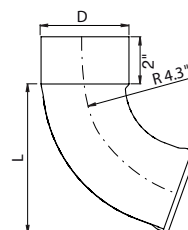
L

inch

4"

4.45"

23 gauge, galvanized steel





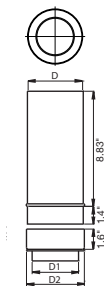
# Downspout & Accessories



**DTE Drain Tile Extension (fits in top of CHUTE)**

Dim	D1	D2
	inch	inch
4"	4"	4.5"

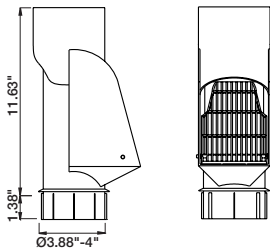
23 gauge, galvanized steel



**CHUTE Inline Leaf Chute**

Dim
4"

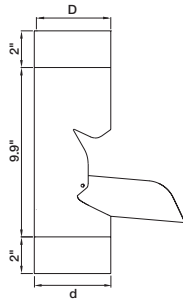
HDPE High Density Polyethylene



**IDT Inline Diverter**

Dim
4"

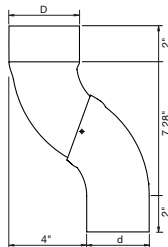
23 gauge, galvanized steel



**OS4 Offset 4"**

Dim
D/d
4"

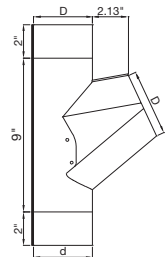
23 gauge, galvanized steel



**YC Y-connector**

Dim
4"

23 gauge, galvanized steel















[nordicsteelgutters.com](http://nordicsteelgutters.com)

**Nordic Steel Gutters, LLC.**

Address: P.O. Box 56227, Virginia Beach, VA 23456 | Shipping address: 2501 Performance Ct, Virginia Beach 23453  
Email: [info@nordicsteelgutters.com](mailto:info@nordicsteelgutters.com) | Web: [nordicsteelgutters.com](http://nordicsteelgutters.com)

© 2024 All rights reserved. Nordic Steel Gutters is a registered trademark. We reserve the right to make alterations without prior notice.  
Whilst every care has been taken in the preparation of this catalog, changes may have occurred since publication.